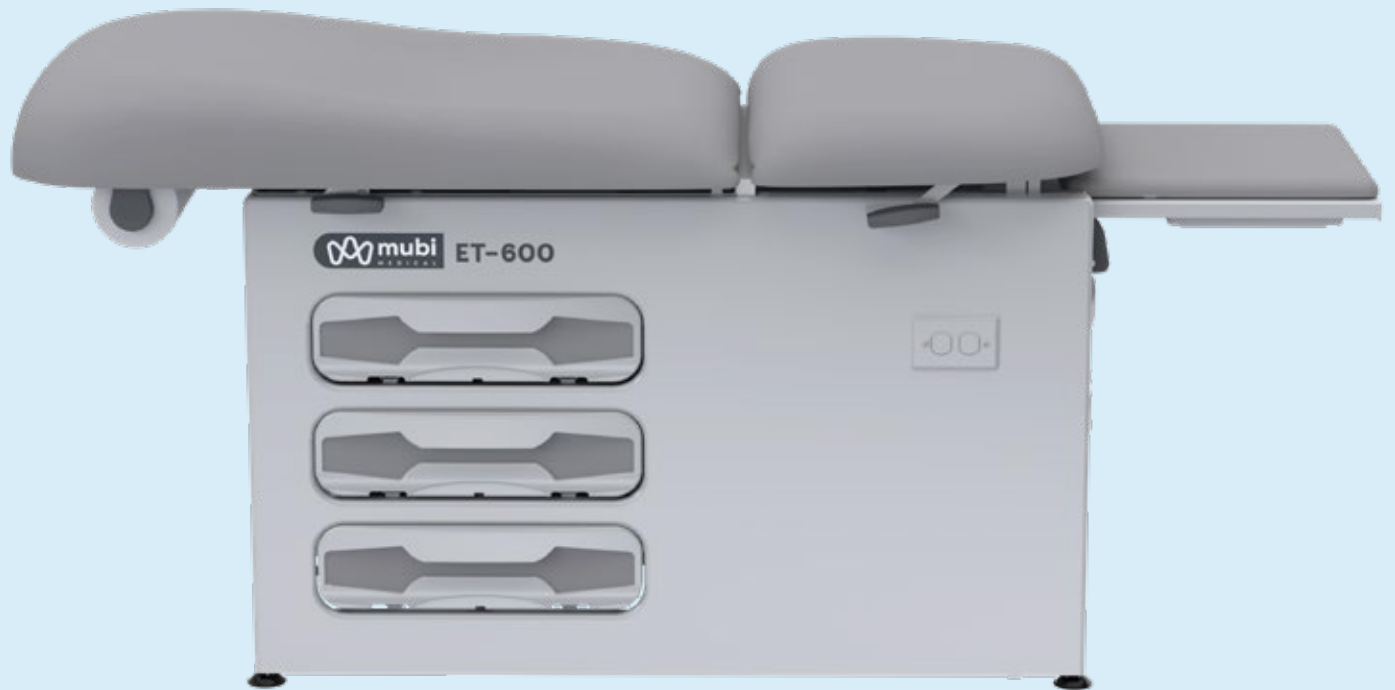


# ET-600

EXAMINATION TABLE

600 lb TOP OF CLASS



## SAFE WORKING LOAD

To keep your patients safe, and comfortable  
while improving workflow.

# ET-600

EXAMINATION TABLE

## Sliding Backrest

helps keep patient from sliding forward and provides greater comfort.



## Seamless upholstery top

facilitates cleaning and disinfection while improving patient comfort.

## Adjustable anti-skid levelers

provide superior stability.

## Large Foot Step section

provides safe access and sense of security during patient ingress / egress.

# IMPROVE WORKFLOW



**Easy patient positioning**  
with simple pneumatic backrest.

## **Storage tray**

under back rest provides additional paper roll storage.



## **Abundant storage capacity**

spacious 3 side drawers and 2 front drawers.

## **Pass-through drawers**

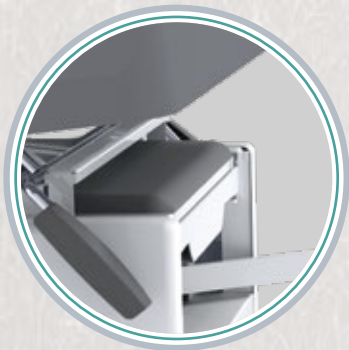
allow for efficient dual-side access, and provide flexibility to change workflow or room layout.



## **Duplex hospital grade electrical receptacle**

supports connection of auxiliary devices.

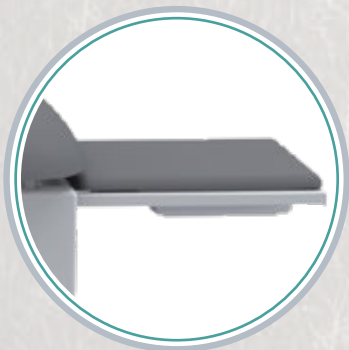
# STANDARD CONFIGURATION



**Pelvic Tilt (7°)**  
to facilitate patient  
examination.



**Adjustable  
Ergonomic Stirrups**  
support 4 positions.



**Leg extension**  
provides added  
comfort and easily  
stows away.



**Plastic fluid basin**  
to help support  
minor procedures.

## ET-600 EXAMINATION TABLE

ET 600 table design brings together best practices, ergonomics, flexibility, superior comfort, and best in class patient weight capacity to enhance the patient and clinician experience during examinations, procedures and consultations. Its soft and contoured upholstered top with sliding backrest feature keeps patients comfortable.



## UPHOLSTERY COLORS\*

### PRANNA®

Pranna is an easy-to-clean, waterproof vinyl, resistant to abrasion and microorganisms.

#### STANDARD COLOR



GRIS



NEGRO

#### CUSTOM COLOR\*



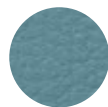
ALMENDRA



AZUL REY



CARAMELO



CELESTE



CENIZA



HORTENSIA



GRANATE



GRIS MEDIO



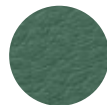
MANDARINA



MARRÓN



PETRÓLEO



SAFARI



TAUPÉ

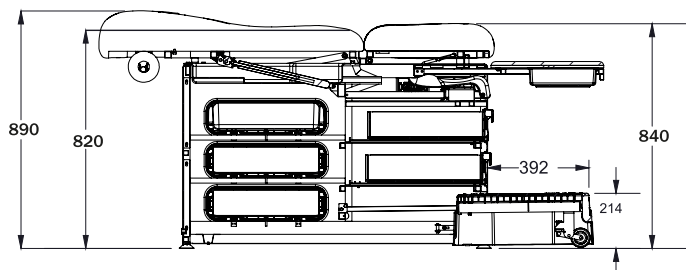
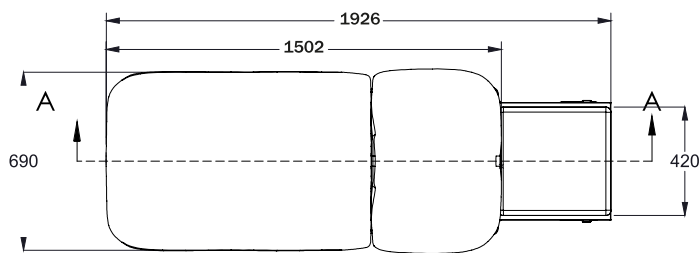


VERDE CLARO

\* Color changes may result in additional costs and may affect the delivery time; please consult with your account executive.

\* Change of color requires 20-unit-minimum order.





### DIMENSIONS \*

Length	76 in (1926 mm)
Width	27 in (690 mm)
Height	33 in (840 mm)
Feet extension	16.6 in x 16 in (424 mm x 420 mm)

### MOVEMENTS \*

Back flexion (pneumatic)	0° to 70°
Pelvis flexion (mechanical)	7°

### STANDARD FEATURES

- Safe working load 600 lb.
- Large foot step with anti-skid surface.
- Three pass-through storage side drawers.
- Two front storage drawers.
- Adjustable ergonomic stirrups.
- Upholstered leg extension.
- Electrical duplex outlet for auxiliary devices.
- Plastic fluid basin.
- Storage tray under backrest.
- Paper roll holder.
- Adjustable anti-skid levelers.
- Examination table structure with epoxy paint finish.
- Pelvic Tilt (7°)

### PACKAGING CODE

Reference 740441



**TRANSFORMING  
SPACES,  
IMPROVING  
LIVES**

Medellín - Colombia  
Calle 2 # 50-185  
(57) 604 285 2838

Cali - Colombia  
Calle 18 # 118-85  
(57) 602 489 6999

[info@mubimedical.com](mailto:info@mubimedical.com) | [www.mubimedical.com](http://www.mubimedical.com)